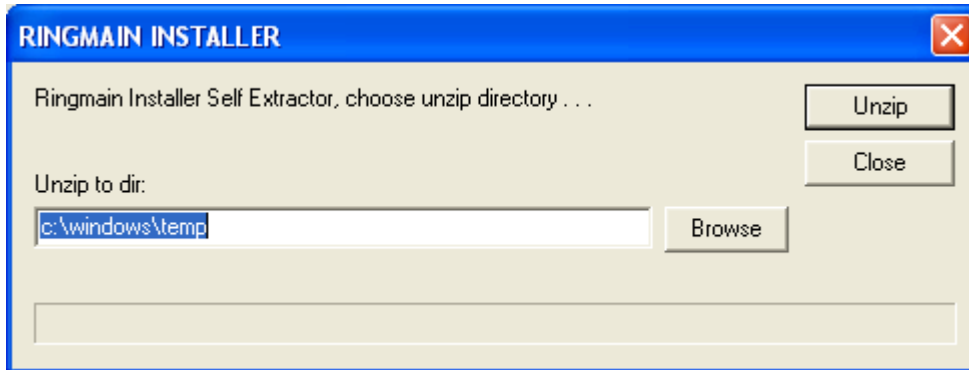
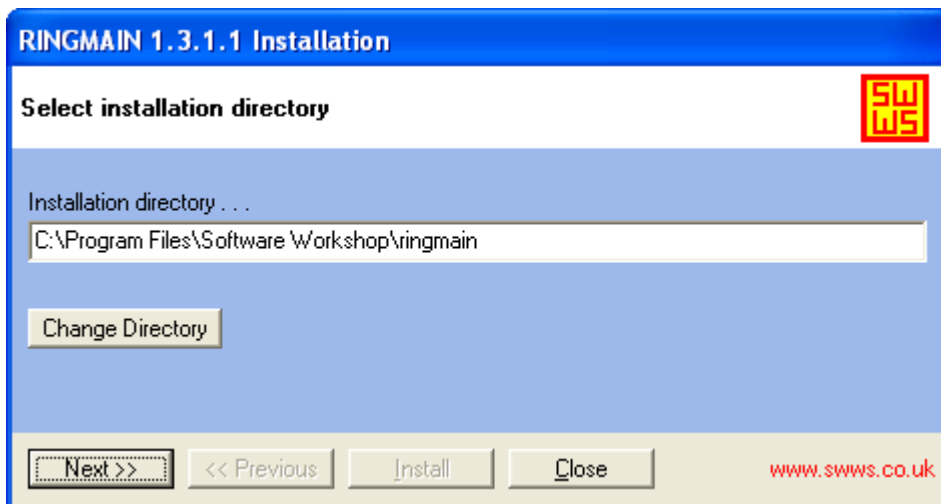


Installing RINGMAIN from self extracting .exe file

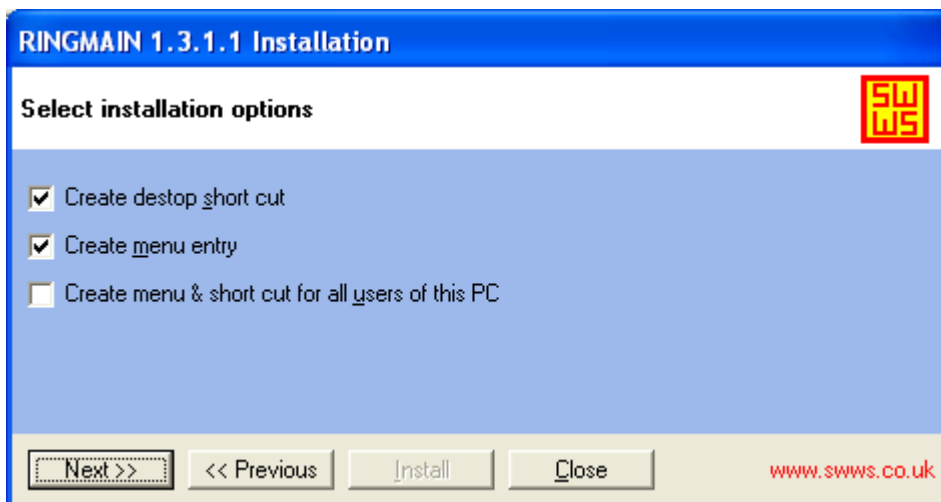
Download the .exe from the [Software Workshop](#) website. Once the download is complete open (start) the .exe, the following window will appear:



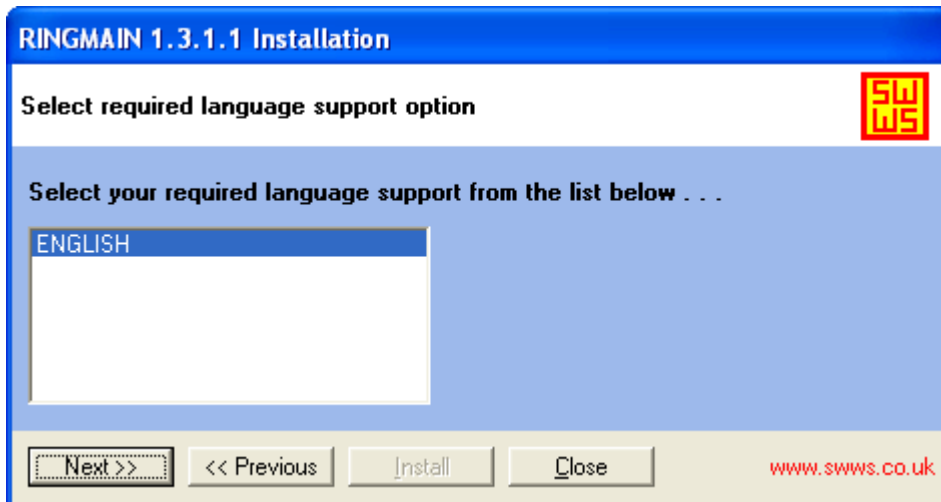
Choose a directory to unzip the RINGMAIN installer into; the default show above is **c:\windows\temp**. Once the directory is chosen select the **UNZIP** button. Once the unzip is complete the following window will appear:



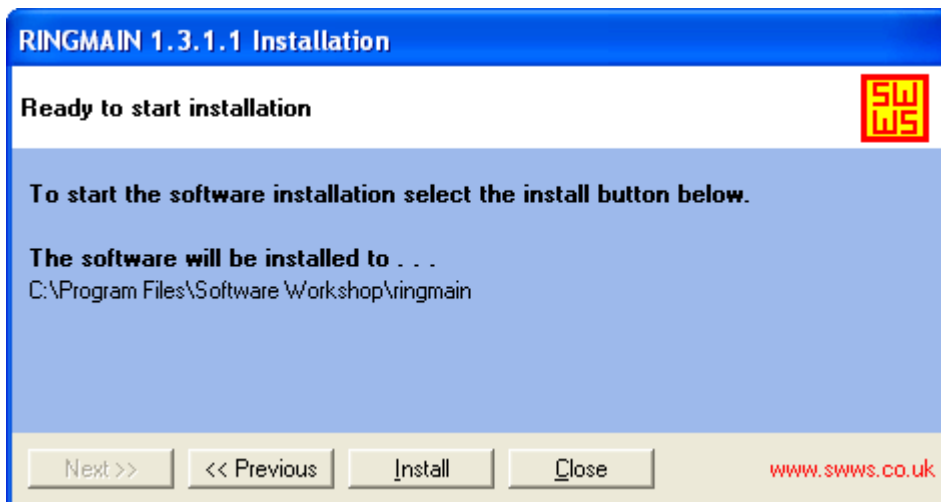
Choose an installation directory for RINGMAIN, and then select the **NEXT** button. The following window will appear:



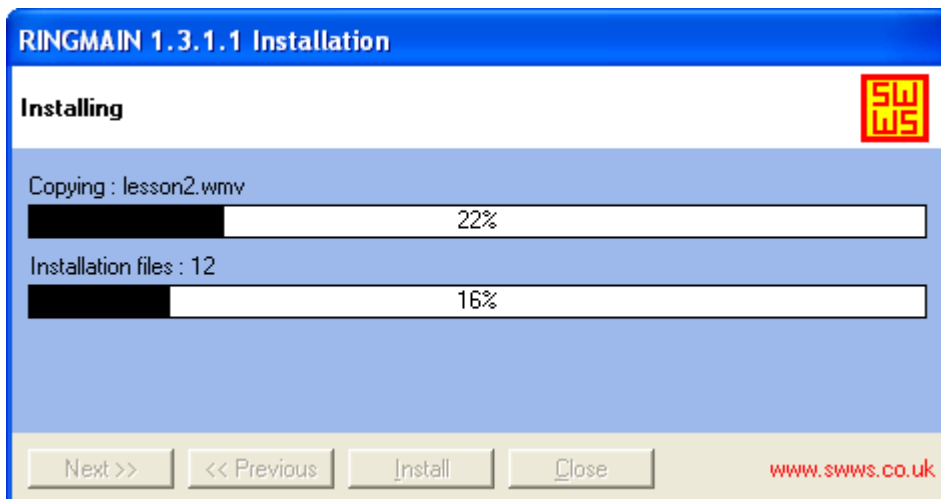
Select your install options, then select the **NEXT** button, the following window will appear:



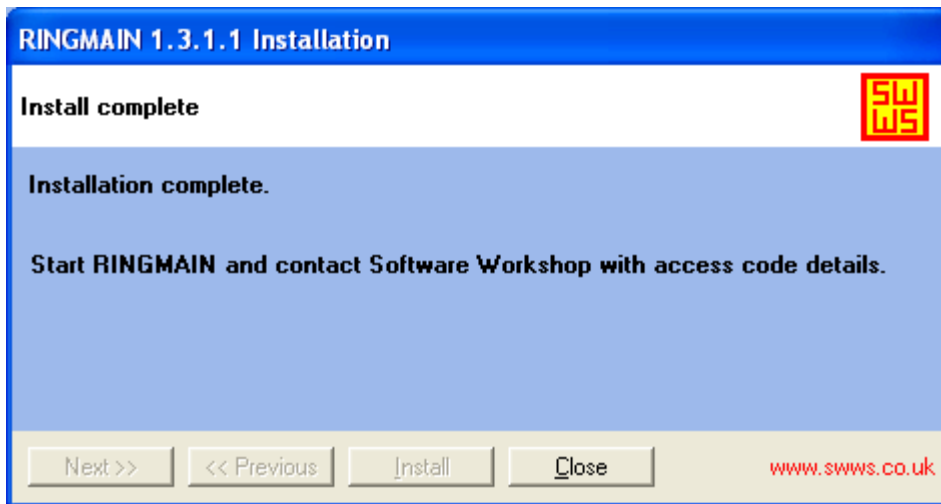
This window allows language installation selection so that RINGMAIN menus etc. use the selected language. Highlight your required language then select the **NEXT** button, the following window will appear:



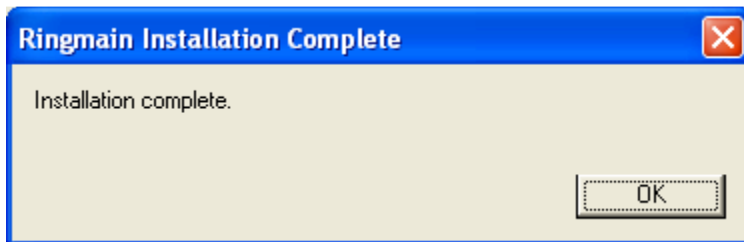
This window displays your installation directory. To install RINGMAIN select the **INSTALL** button. The following window appears display installation progress:



Once the installation is complete the following window appears:



Select the **CLOSE** button, the following window will appear:



Select the **OK** button; you are now ready to use RINGMAIN. If there are any problems contact support@swws.co.uk